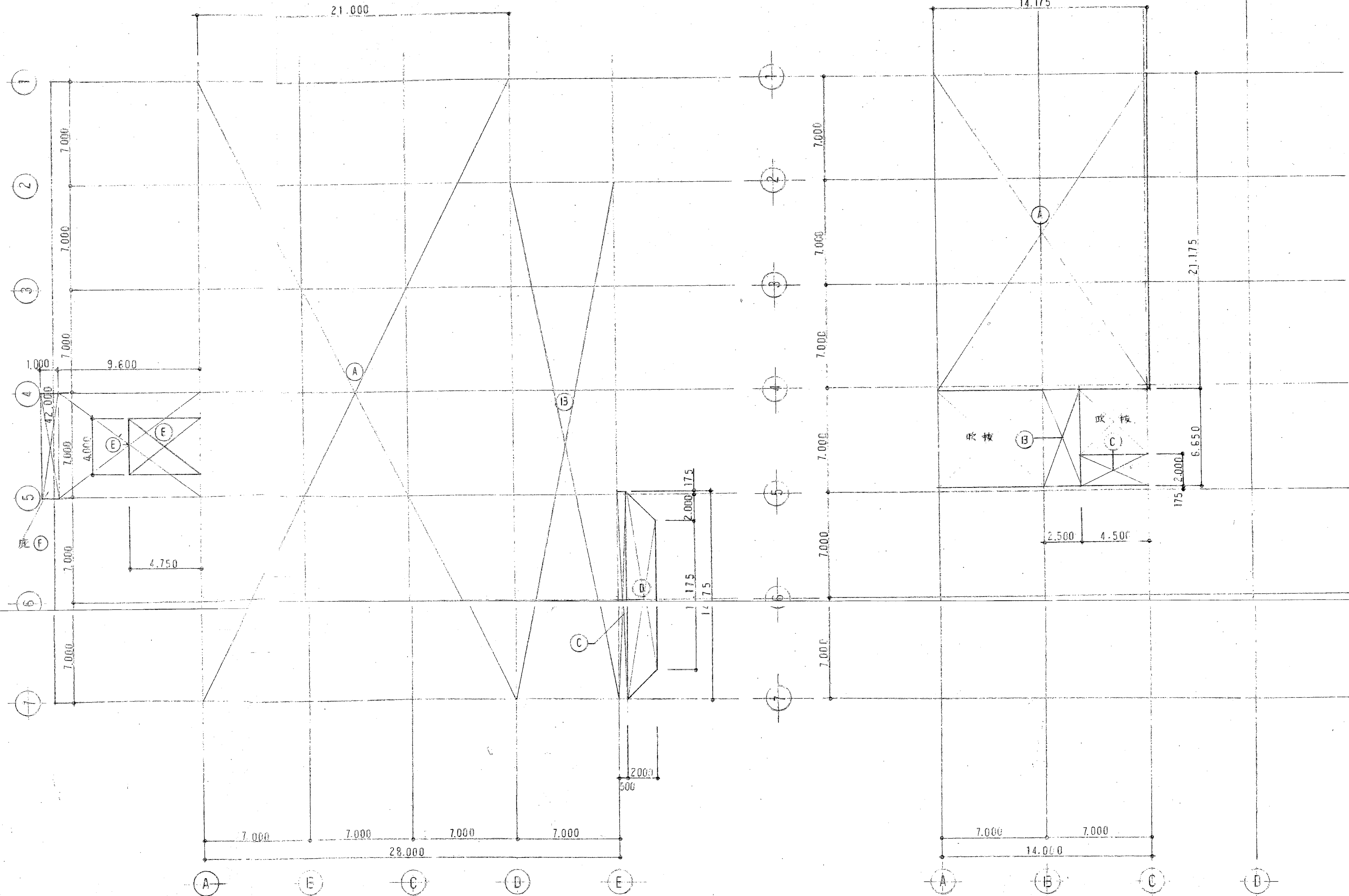


敷地求積図 1/300

$$(46.176 + 46.837) \times 95.303 \times 1/2 = 4,432.208 \text{ M}^2$$



一階求積図 1/200

二階求積図 1/200

求積表 (建築面積)

A	21.000 × 42.000	= 882.000
B	7.000 × 35.000	= 245.000
C	0.500 × 14.175	= 7.087
D	(10.175 + 14.175) × 2.000 × 1/2	= 14.350
E	9.600 × 7.000	= 67.200
F	1.000 × 7.000	= 7.000
合計		1,222.637

求積表 (各階床面積)

1 F	A	21.000 × 42.000	= 882.000	1,167.437
	B	7.000 × 35.000	= 245.000	
	C	0.500 × 14.175	= 7.087	
	D	(14.175 + 10.175) × 2.000 × 1/2	= 14.350	
	E	4.750 × 4.000	= 19.000	
2 F	A	14.175 × 21.175	= 300.155	325.780
	B	2.500 × 6.650	= 16.625	
	C	4.500 × 2.000	= 9.000	
合計			1,493.217	(451,798)

